



WARWICKSHIRE COLLEGE  
**UNIVERSITY  
CENTRE**

# HIGHER EDUCATION COURSE GUIDE

2022/23



ROYAL LEAMINGTON SPA  
COLLEGE



RUGBY  
COLLEGE



MORETON MORRELL  
COLLEGE



WARWICK TRIDENT  
COLLEGE



EVESHAM  
COLLEGE



PERSHORE  
COLLEGE



MALVERN HILLS  
CENTRE FOR DIGITAL  
& CYBER TECHNOLOGY

[wcg.ac.uk/he](http://wcg.ac.uk/he)



QAA

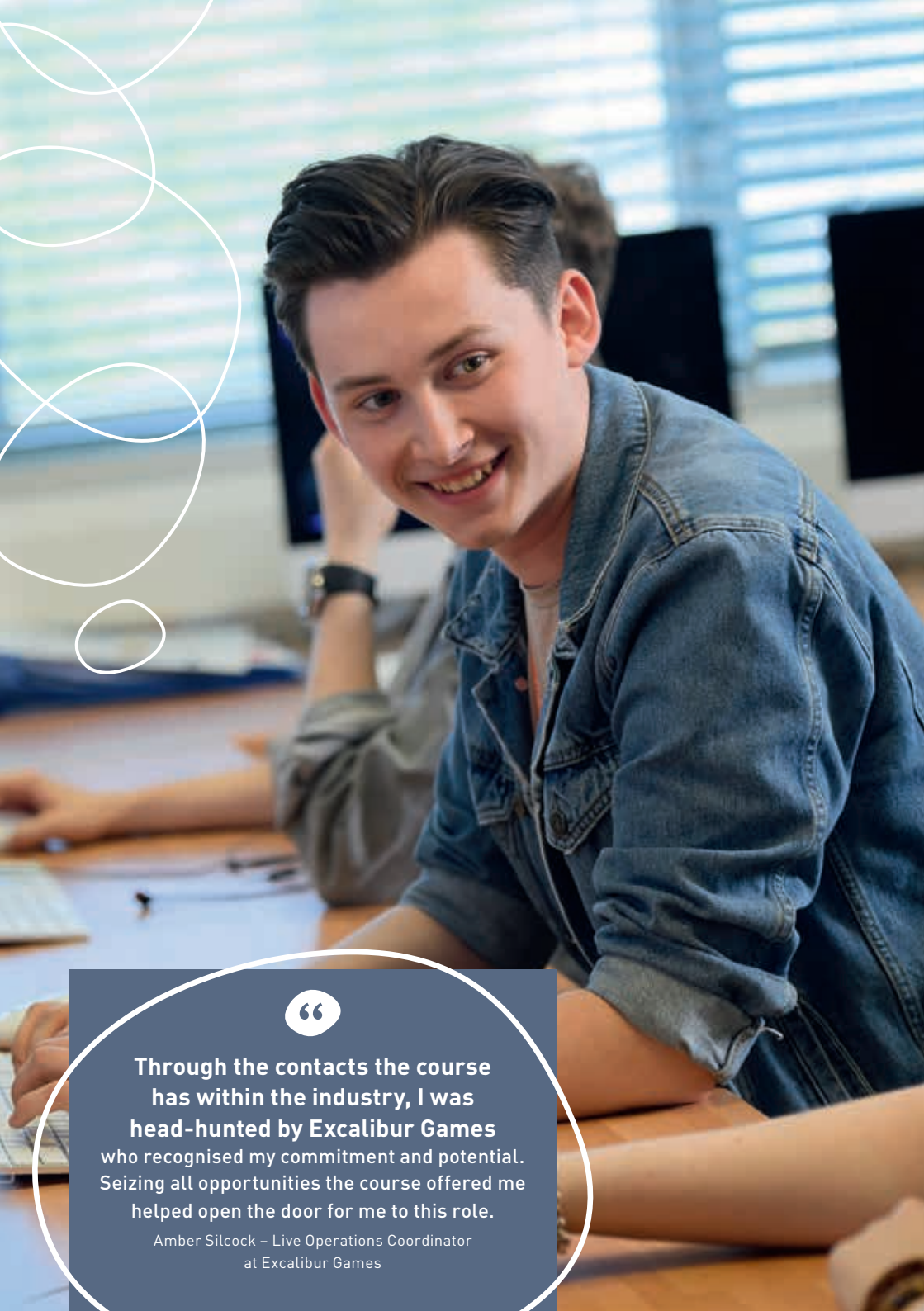
UK Quality Assured



BE CHALLENGED

| BE INSPIRED

| BE EXTRAORDINARY



# OUR 2022/23 OPEN EVENTS

Our Open Events are structured in a way that will assist you in making the right decision about where to study. You will experience what it is like to be a Warwickshire College Group student and discover our facilities for yourself.

Visit our Degree Open Events to:

EXPLORE OUR FANTASTIC FACILITIES

SPEAK TO THE EXPERTS

ASK QUESTIONS

MEET CURRENT STUDENTS

APPLY TO STUDY ON THE DAY

VISIT OUR HALLS OF RESIDENCE

DISCOVER WHAT'S ON OFFER

Find out more and see details of our future Open Event dates at: [wcg.ac.uk/openevents](http://wcg.ac.uk/openevents)



Through the contacts the course has within the industry, I was head-hunted by Excalibur Games who recognised my commitment and potential. Seizing all opportunities the course offered me helped open the door for me to this role.

Amber Silcock – Live Operations Coordinator at Excalibur Games

# CONTENTS

Welcome	5	Student facilities	23
Bachelor degree awarding powers	6	What our students say	24
Why study at WCUC?	8	Our degree courses	25
Inspiration outside the classroom	10	Celebrate at your graduation	60
How we will support you	12	Higher and Degree apprenticeships	61
Our approach to teaching	14	International students	62
Types of qualifications	15	Entry requirements	63
Warwickshire colleges	16	Fees and funding	64
Worcestershire colleges	18	Next steps – How to apply	65
Accommodation	20		
Life at WCUC	22		



## WELCOME TO WARWICKSHIRE COLLEGE AND UNIVERSITY CENTRE (WCUC)

**A place for ambitious, talented and determined students.**

We deliver specialist degrees with a strong technical focus designed to support our graduates to achieve their potential. We work hard to meet the needs of our undergraduates and choosing our University Centre means you'll be part of an exciting and dynamic community of students.

We understand the need for you to stand out as a graduate when entering the job market and that is why our industry experts design our degree courses. We also know that you will flourish studying in our safe, friendly campuses alongside our supportive staff who will make you feel right at home and allow you to focus fully on your personal and professional development.

We have been working hard across our campuses enhancing our offer and investing in facilities that reflect the requirements of contemporary industry and professional sectors. These developments include the WCG Career Launchpad platform which is now available to all our undergraduates providing advice and support to enhance employability throughout your studies.

Deciding what and where to study is a major life decision, but if you choose to study at a Warwickshire College University Centre, you are taking the first step towards a very bright future.

**Angela Joyce**  
CEO – Warwickshire College Group



# BACHELOR DEGREE AWARDING POWERS

We are the first college group in the UK to be granted a duo of degree awarding powers by the Office for Students, which means from 2021 we can design and award our own full three-year Honours degree qualifications, as well as continuing to award our own Foundation degree programmes, a power we have held since 2014.



Our first three-year Honours degree courses will be offered **from September 2021** and include a BA (Hons) in Games Art, a BSc (Hons) in Computer Networks and Cybersecurity, a BA (Hons) in Digital Film Production and a BA (Hons) in Counselling and Psychotherapy.



We have been running higher education programmes for over 30 years at Warwickshire College Group and these powers are awarded following a rigorous assessment process spanning several months. We pride ourselves on offering qualifications and apprenticeships aligned to key industries and jobs, and we can now apply this to our own degree courses by ensuring all of our degrees have a technical or professional focus.



# WHY STUDY AT WCUC?



## INDUSTRY PARTNERSHIP

WCUC has **strong industry links** that enhance our graduate employability prospects. Our degrees are designed with advice from employers and industry to ensure that our courses **educate, challenge and inspire you**. We are constantly updating our degree courses with the latest developments, with experts providing full support to help you develop a wealth of knowledge and confidence in your ability. On many of our courses, students have the opportunity to work on live business briefs whilst benefiting from industry input across lessons, masterclasses and placements. Our students develop employability skills and behaviours for the modern workplace.



## A FLEXIBLE APPROACH

When you're making a decision as important as this, you need to have the right options available to you. That's why we offer a diverse range of courses from **Honours to Foundation degrees, HNCs and HNDs** to suit your situation.

Juggling family commitments, changing career and fitting study around work can be tricky. Our part-time courses can help you earn as you learn, further your career and ultimately **enhance your future prospects**.



## HIGH QUALITY

We are the only college group in the UK to be granted powers by the Office for Students **to award its own Foundation degrees and from 2021 our own Bachelor's degrees**. This means we have met the robust quality assurances and academic standards set for all higher education institutions.



## INDUSTRY-STANDARD FACILITIES

Across our seven campuses we have a **range of facilities that allow you to develop and excel with us**. From laboratories to animal therapy units, and the latest creative design and statistical analysis software tools, we have it covered!



## SMALL CLASS SIZES

The majority of our classes are small allowing you to train and study in a more focused environment. You **benefit from more one-to-one time** with your lecturer or instructor and it's easier to get to know your classmates. This also allows us to **tailor your course to suit you**.

We can pick up on your strengths and weaknesses, likes and dislikes and work around a learning style that'll suit you and help you **achieve your true potential**.

## Today's job market is dynamic and ever changing

We believe that to be successful throughout your working life, you need a range of skills and attributes – and foremost among these is an enquiring, creative and entrepreneurial mindset. Qualities that enable you to move from job to job, progress up the career ladder and be adaptable.

To help develop these qualities, our degree courses include a tailored module called **Academic Study Skills, Employability and T-Shaped (ASSET)** – our way of helping you on your personal development journey.



“  
Studying through a college for a degree meant there was much better interaction between the students and the tutors.”

Shaun Anderson – BEng (Hons) Engineering



# INSPIRATION OUTSIDE THE CLASSROOM

## EQUINE EVENTS

With an indoor and covered outdoor manège, Moreton Morrell College hosts an array of competitions and events throughout the year. The college also has an affiliated riding club students can join, train and compete individually in or as part of a team representing Moreton Morrell.

### Students can expect to see:

- British dressage and unaffiliated dressage competitions
- British eventing, British riding clubs and unaffiliated horse trials
- BRC & unaffiliated show jumping & clear round jumping evenings
- Dog agility shows
- Camps and training days



## LET'S TALK GAMES

A two-day event hosted each year that welcomes talks by games industry experts at our **Royal Leamington Spa College**. Representatives from a wide range of studios attend, including Playground, Exient, PixelToys and Codemasters, with a wide range of subjects discussed.



## WCUC STUDENT CONFERENCE

This is an annual themed event that is attended by students across all WCUC Higher Education provision, and features presentations from research academics from WCUC and local universities. In 2018, the conference explored the interdisciplinary links between science and the arts, while in 2019, presentations and debates took place on the subject of how technology is transforming future careers and research. In 2020 the theme was sustainability as it relates to both personal and professional practice in employment. Guest presentations have been given by academics from University of Birmingham, Coventry University and the Royal Veterinary College.



## FUTURES WEEK

This is a week-long event packed with advice on careers and employability, business set-up and managing your professional social media profile. During the week each course also invites in expert guests to run masterclasses or workshops on specific topics, which will help you to enhance your professional practice.



# HOW WE WILL SUPPORT YOU

**At WCUC our students are supported both academically and pastorally, as we want to help you reach your learning goals and progress.**

Alongside our excellent lecturer support, we also have a team of staff who can help you at every stage of your journey with us.

## CAREERS TEAM

**The Careers Team** are at the heart of our high quality student support system. Our team can offer impartial and confidential help on a whole range of subjects, including:

- Exploring your career ideas
- Advice about bursaries
- Advice on funding your learning
- Welfare matters
- Job search support
- Health and mental wellbeing

## ACCOMMODATION TEAM

We have halls of residence at three of our colleges – **Moreton Morrell, Pershore** and **Royal Leamington Spa** – providing a range of en-suite, catered and self-catered accommodation for students (see page 20). Our accommodation team offer advice throughout your stay with us to ensure you have one less thing to worry about. Get in touch with the team on **accommodation@wgc.ac.uk**.

## INCLUSION AND LEARNING SUPPORT

WCUC has an **Inclusion Team** dedicated to working with our higher education students. They support students with a range of different needs, including specific learning difficulties (dyslexia), physical and sensory disabilities, ASC / Autism, mental health and medical conditions.

Their aim is to ensure that appropriate support is in place when you arrive at WCUC, and are happy to provide information and guidance before you complete your application, via email, phone or at college open events.

**The Inclusion Team** works closely with academic staff to ensure that reasonable adjustments are provided within the classroom.

It is important that you tell us about your individual needs as soon as possible so that we can give you advice as to the most appropriate support on your chosen course. This includes guiding you through the process of applying for the Disabled Students Allowance.



## CARE LEAVERS

There are many challenges faced by care leavers entering education – that’s why we want to make the process as easy as possible for you.

We can provide help and advice on tuition fees, accommodation and the range of support available to help you once you start your course, such as bursaries and study skills. To help us help you, please tick the box on your UCAS application form to notify us that you are a care leaver. If you didn’t tick the box on your UCAS form or you would like more information, call us on **0300 456 0049**.

## EARN WHILE YOU LEARN

At WCUC we know how important it is to develop your skill set while also benefiting from employment opportunities available to you while you study.

Our careers team and HE work placement coordinators provide the guidance and support you need to assist with your career development. The team share jobs, volunteering roles and work experience.

Many of our students have gone on to successful roles within an array of companies, as well as setting up their own businesses, both nationally and internationally. We even employ some higher education students as HE envoys, events assistants and residential wardens.



## OUR APPROACH TO TEACHING

At WCUC we vary our teaching style depending on the course and module you are studying. Our lecturers want to help you achieve the best you can, and students can expect to learn through the following:

### LECTURES AND WORKSHOPS

Small classes form the basis of teaching and allow you to train and study in a more focused environment.

### TUTORIALS

Our students benefit from a lot of contact time with tutors, including one-to-one tutorials. You will meet with them regularly to discuss your learning goals and progression.

### PROJECT WORK

Learn individually, or within small groups, on real-life case studies and theoretical assignments.

### LABORATORY SESSIONS

Develop your industry-specific skills in our range of laboratories.

### CAREERS ADVICE

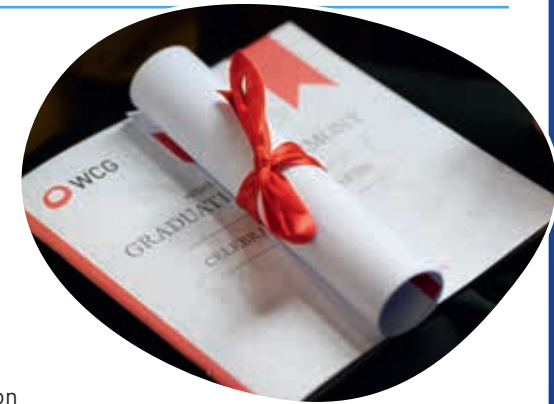
Your year group will meet for careers talks and common topic discussions allowing for closer support and exploration of your job opportunities. Our Career Launchpad online employability portal will help prepare you for job interviews, and give you tips for CV writing in addition to keeping you up to date with current affairs and updates from your chosen profession or sector.



## TYPES OF QUALIFICATIONS

### BACHELOR DEGREE

The most recognised and widely available type of undergraduate qualification, common denominations are BA (Bachelor of Arts), BSc (Bachelor of Science) and BEng (Bachelor of Engineering). A full-time degree would normally take three years to complete.



### FOUNDATION DEGREE

A Foundation degree is a higher education qualification with the added benefit of work-based and placement learning hours, created in partnership with employers, giving you valuable industry experience.

You can study the Foundation degree for two years (full-time), and successful completion may give you access to a full Honours degree through a further year of study at Level 6.

Most of our Foundation degrees have Level 6 top-ups available at the same site, so you can achieve a full Honours degree and have gained valuable work experience at the end of your studies.

### INTEGRATED FOUNDATION YEAR

These are designed to prepare you for entry to your chosen degree, resulting in a four-year course leading to a Bachelor degree. This type of qualification is suitable for learners who might not have the grades for direct entry onto a degree or who are looking to change career.

### HND / HNC

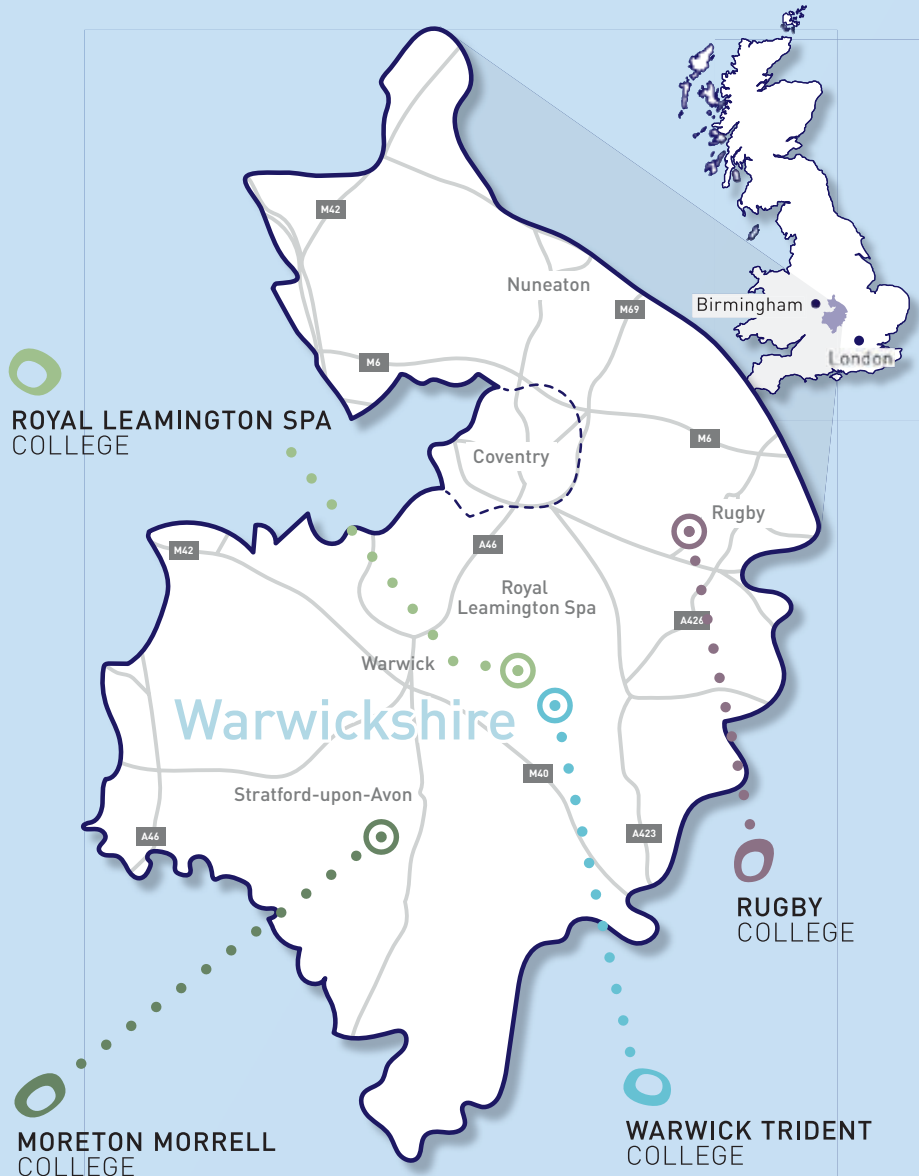
These are 'Higher National' qualifications with a technical and professional focus. A HNC is completed at Level 4 and HND at Level 5. They are often studied by learners already employed in practical industries and professions.

### ACCESS TO HIGHER EDUCATION (HE)

These one-year full-time courses prepare learners to study for a degree if they don't have the Level 3 qualifications required for direct entry. They are accepted by many universities as an alternative to A Levels or BTECs, that mature learners (aged 19 or over) may gain.



# OUR WARWICKSHIRE COLLEGES



## CAMPUSES

- Moreton Morrell College
- Royal Leamington Spa College
- Rugby College
- Warwick Trident College



## ACCOMMODATION

- Moreton Morrell College
- Royal Leamington Spa College



## TRAVEL LINKS

- Leamington Spa direct train links to Birmingham (30 mins), Manchester (2 hours 15 mins), London (1 hour 20 mins) and Oxford (40 mins)
- Birmingham Airport – 30 mins by train or car
- Heathrow – 1½ hours by car
- Rugby direct train links to Birmingham (40 mins), London (from 1 hour)



## POINTS OF INTEREST & THINGS TO DO

- Warwick Castle
- Anne Hathaway's Cottage
- Jephson Gardens
- Experience an eclectic mix of local crafts, artists, traders and entertainers at the annual two-day **Peace Festival** in the heart of Leamington Spa. One not to be missed!
- Watch a play at one of **three theatres** in Stratford-upon-Avon. Shows are broadcast live around the world, and you might even see someone you recognise on stage
- Be wowed by the turrets of **Warwick Castle** where you can see a jousting contest come to life, or explore the castle's history within the depths of their dungeon
- Visit the world-class destination of **Ricoh Arena**. An array of sporting events, including rugby and football, awaits. Plus, you can expect to see some of the world's biggest entertainment acts performing
- Shakespeare's Birthplace
- British Motor Museum
- Ricoh Arena, Coventry

# OUR WORCESTERSHIRE COLLEGES



## CAMPUSES

- Evesham College
- Pershore College
- Malvern Hills Centre for Digital and Cyber Technology



## ACCOMMODATION

- Pershore College



## TRAVEL LINKS

- Birmingham International Airport is approximately 40 minutes away
- Worcestershire also has excellent road links to the major motorways (M5, M6, M40, M42, M50) and London is just 2½ hours away
- Worcestershire has many major train stations throughout the county with a regular main line train service to and from London, Birmingham, the north and the south-west of England
- There are many bus and coach operators that travel to Worcestershire



## POINTS OF INTEREST & THINGS TO DO

- Elgar's Birthplace
- Broadway Tower
- Three Counties Showground
- Explore the royal tombs, medieval cloisters and beautiful grounds of **Worcester Cathedral**, or visit one of their exhibitions or concerts
- Walk, cycle or horse ride the **iconic landscape of the Malvern Hills and the Cotswolds**. Prepared to be wowed, but make sure you make a stop at one of the cafés and attractions along the route
- Take a day out or spend an evening at one of two renowned racecourses. Visit the home of jump racing at **Cheltenham Racecourse**, or the stunning riverside location of **Worcester Racecourse**
- Worcestershire offers an array of sporting venues and fixtures, including cricket, rugby and football and is the home of the **Worcester Warriors**
- The annual metropolitan **Worcester Music Festival** supports emerging artists, whilst raising money for charity. The festival takes place in more than 20 venues across the city centre and is host to 250 bands over three days
- West Midlands Safari Park
- Worcester City and Cathedral
- Severn Valley Railway



# ACCOMMODATION

We have halls of residence at three of our college sites providing a range of catered and self-catered accommodation for students.

We know how difficult it can be moving away from home, and we want to make it as comfortable and easy as possible. Our accommodation team are on hand to provide advice and guidance throughout the process, and your stay with us. Plus, the warden team will ensure that you feel safe, secure and looked after at all times.

To find out more and our see full terms and conditions, visit the website at [wcg.ac.uk/accommodation](http://wcg.ac.uk/accommodation)

## ROYAL LEAMINGTON SPA HALLS

- Own bedroom and study area
- En-suite
- Communal kitchens
- Self-catered
- On-site gym facilities\*
- 10 minutes walk from the town centre



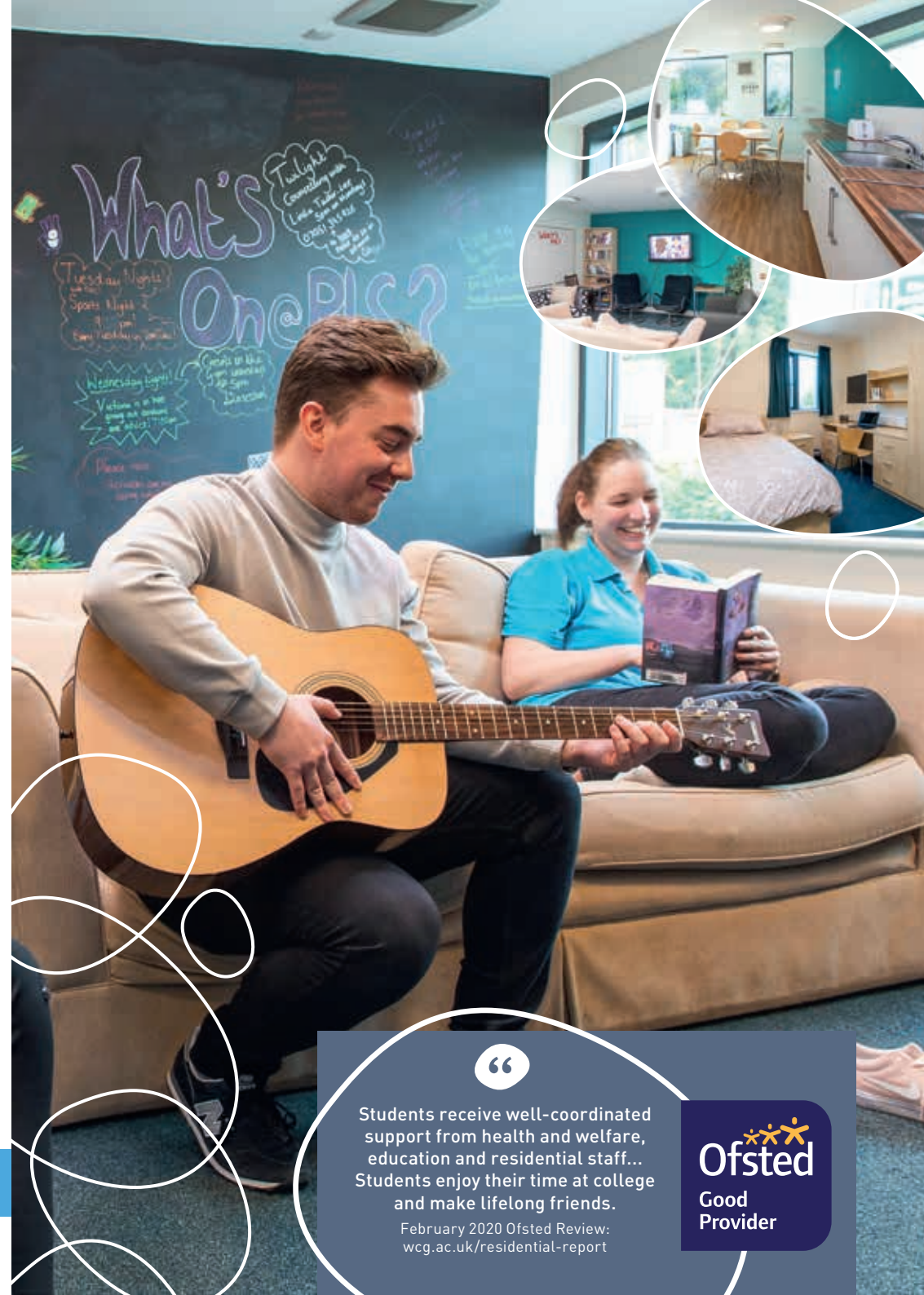
## MORETON MORRELL HALLS

- Own bedroom and study area
- En-suite
- Self-catered and catered options
- Communal kitchen
- On-site gym facilities\*
- Surrounded by 750 acres of countryside



## PERSHORE HALLS

- Own bedroom and study area
- En-suite
- Communal kitchens
- Self-catered
- Set in beautiful countryside



Students receive well-coordinated support from health and welfare, education and residential staff... Students enjoy their time at college and make lifelong friends.

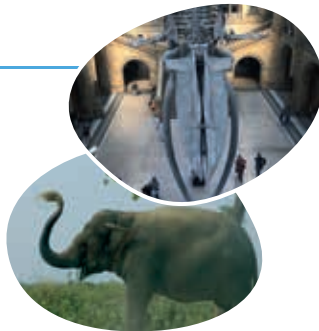
February 2020 Ofsted Review:  
[wcg.ac.uk/residential-report](http://wcg.ac.uk/residential-report)



# WCUC LIFE

## ACADEMIC FIELD TRIPS

HE students have been on a number of self funded, course-related field trips over the last few years which have included **South Africa, India and Sri Lanka**, as well as various course-related field trips such as **Chester Zoo, Natural History Museum and The Guide Dog National Breeding Centre**.



## NIGHTLIFE

Not only can you enjoy the on-campus bars (Moreton Morrell and Pershore) which run popular events such as **live band nights, Black Tie Carnival and Christmas parties**, the towns and cities on your doorstep also offer a huge choice of fantastic nightlife. Students can choose from wine bars and restaurants, to nightclubs, traditional pubs and large professional music venues and theatres. So if you're looking to watch a Shakespearean tragedy, catch a big name music artist, or just get your friends together for a birthday meal somewhere nice – you can be sure we've got it covered here.

## YOUR STUDENTS' UNION

With fundraising, environmental campaigns and day trips, there are lots of events going on thanks to the **Students' Union (SU)**. The SU is made up of a group of elected students whose job is to entertain you, represent you and look out for your rights and needs. They will make sure your experience at college is the best it can be and run a programme of events and activities.

## CULTURE AND THE ARTS

Theatre performances take place each year at **Rugby College** and you can visit one of many art exhibitions in our studios at **Royal Leamington Spa**. Check out our talented music performance students at one of their gigs and get a front row ticket for our student fashion shows – a must see!

Go to [wcg.ac.uk/events](http://wcg.ac.uk/events) to see the latest.



# OUR STUDENT FACILITIES

At WCUC we want to make your student experience the best it can be, and that extends further than the excellent education we offer you. Whether you are looking to train, perform or socialise, we have something for everyone.

## SPORT AND FITNESS

At **Royal Leamington Spa, Rugby and Moreton Morrell colleges** we have on-site gyms available for all students to access\* via great value unlimited student gym memberships - or you can pay as you go.



Some of our colleges also feature sports halls and a range of pitches - including all-weather - available to hire.

## LIBRARIES

We offer an array of resources and study spaces at our libraries across all of our colleges. Borrow books, journals and electronic resources with our expert staff on hand to offer support and guidance. There's also an online catalogue for you to access hundreds of publications across all subjects.

**Open-access PCs, printers, scanners, photocopiers and private areas** make this the ideal place to study individually or in groups.



## STEM CENTRE

**Enrich your studying** and engagement across science, technology, engineering and maths. Test your reaction times, or programme one of our NAO robots to perform a dance routine, in our **state-of-the-art STEM Centre at Royal Leamington Spa College**.



## LOCAL COLLEGE AMENITIES

Across our colleges we offer a variety of amenities, including **Starbucks, Costa, Pershore Press, Link Nurseries** and **Pershore College Garden Centre**.



## WHAT OUR STUDENTS SAY



“

The tutors gave me hope and supported me all the way and now I'm absolutely loving being a psychotherapist in private practice.

Ben Warden – BA (Hons) Counselling

“

My film was selected for the Miami Film Festival competition, which is great. It's part of the IMDB Pro line up.

A digital film course can provide somebody like me a greater understanding of the technical aspects of film making.

Joseph Wallace – Digital Film Production



“

Studying through a college for a degree meant there was much better interaction between the students and the tutors.

Shaun Anderson – BEng (Hons) Engineering



“

Attending [WCUC] was one of the best decisions I ever made.

The skills I learned – stage combat, singing, dancing and improvisation to name a few – have developed me as an actor to take on the industry as a professional actress.

Lorie-Lanie Shanks – FdA in Performing Arts



## OUR DEGREE COURSES

Integrated Foundation Year	26	Business and Management	44
Access to Higher Education	27	Counselling and Psychotherapy	49
Animal	28	Early Years	52
Equine	30	Digital Film Production	54
Veterinary	34	Digital Media Content	55
Agri-Tech	38	Graphic Design with Photography	56
Construction	40	Games Art	57
Engineering	41	Performing Arts	58
Computer Networks and Cybersecurity	42	Sport	59

### KEY

WCG	Warwickshire College Group	EVE	Evesham College
WCUC	Warwickshire College and University Centre	MHDC	Malvern Hills Centre for Digital and Cyber Technology
RLS	Royal Leamington Spa College	PER	Pershore College
RUG	Rugby College	CU	Coventry University
TRI	Warwick Trident College	CAVA	Cambridge Access Validating Agency
MM	Moreton Morrell College		

Courses are subject to availability and change. Terms and conditions apply.

# INTEGRATED FOUNDATION YEAR COURSES

**At WCUC we believe in making higher education accessible for students with a variety of backgrounds, academic profiles or experience. We recognise that you may not yet have the entrance requirements for one of our courses, or have taken a break from learning, but with extra time and support we can help you start your life-changing journey.**

Our Integrated Foundation Year courses can help you gain the qualifications and skills that are right for you. In your additional introductory year, you will study subject modules alongside modules that enhance your learning skills, helping you to succeed on your chosen degree. With a lower fee for the first two years, this four year full-time course is comparable in price to a standard three year degree.

## LOCATIONS



RUGBY COLLEGE



ROYAL LEAMINGTON SPA COLLEGE

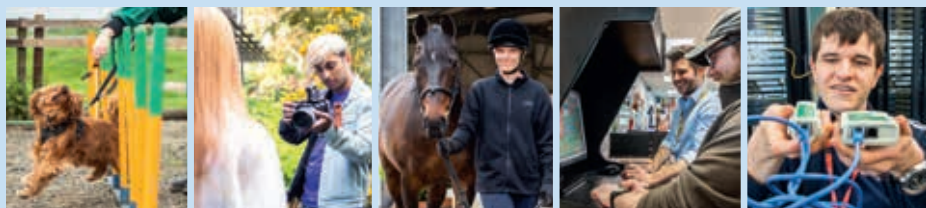


PERSHORE COLLEGE



MORETON MORRELL COLLEGE

SUBJECT	AWARDING BODY	AWARD	LOCATION & STUDY MODE	UCAS CODE	ENTRY REQUIREMENTS (see page 63)
Animal Behaviour and Training	CU	BSc (Hons)	MM – Full-time	D307	Level 3
Business and Management	Warwickshire College	BA (Hons)	RLS – Full-time	NN14	Level 3
Canine Therapy and Rehabilitation	CU	BSc (Hons)	MM – Full-time	D302	Level 3
Computer Networks and Cybersecurity	Warwickshire College	BSc (Hons)	RLS & RUG – Full-time	I905	Level 3
Counselling and Psychotherapy	Warwickshire College	BSc (Hons)	RLS & PER – Full-time	B944	Level 3
Digital Film Production	Warwickshire College	BA (Hons)	RLS – Full-time	019W	Level 3
Equine Performance Coaching	CU	BSc (Hons)	MM – Full-time	DX42	Level 3
Equine Therapy & Rehabilitation	CU	BSc (Hons)	MM – Full-time	D423	Level 3
Equine Science	CU	BSc (Hons)	MM – Full-time	D324	Level 3
Games Art	Warwickshire College	BA (Hons)	RLS – Full-time	I633	Level 3
Performing Arts	Warwickshire College	BA (Hons)	RUG – Full-time	W474	Level 3



# ACCESS TO HIGHER EDUCATION

**Access to Higher Education (HE) diplomas are courses that prepare you to study for a degree. They are designed for people aged 19 and over who may have left school without the usual qualifications, such as A Levels.**

Many Access to HE students go on to succeed at university and beyond – pursuing new careers and seeing changes in their lives that they had never thought possible.

Students study in a supportive environment with other adult students. We ease students back into education by building on existing experiences. We offer a range of industry-specific Access to HE courses, so that you can start working towards your chosen career straight away.

The Diplomas are validated by Cambridge Access Validating Agency (CAVA) and are recognised by the Quality Assurance Agency (QAA) for Higher Education.

## LOCATIONS



RUGBY COLLEGE



ROYAL LEAMINGTON SPA COLLEGE



PERSHORE COLLEGE



SUBJECT	AWARDING BODY	AWARD	LOCATION & STUDY MODE	ENTRY REQUIREMENTS (see page 63)
Access to HE – Digital Security and Technology	CAVA	Diploma	RLS – Full-time	See website
Access to HE – Engineering	CAVA	Diploma	RUG – Full-time	See website
Access to HE – Health Professions	CAVA	Diploma	RLS / RUG / PER – Full-time	See website
Access to HE – Midwifery	CAVA	Diploma	RLS / RUG – Full-time	See website
Access to HE – Nursing	CAVA	Diploma	RLS / RUG – Full-time	See website
Access to HE – Social Science	CAVA	Diploma	RUG – Full-time	See website
Access to HE – Social Science and Humanities	CAVA	Diploma	RLS – Full-time	See website



# ANIMAL BEHAVIOUR & TRAINING

BSc (HONS)

The BSc (Hons) Animal Behaviour and Training course provides you with the skills and knowledge you need to begin work in one of the most diverse and rewarding sectors of the animal industry.

This course will develop your knowledge and skills in animal behaviour and ethology, whilst exploring the ethics and key legislation necessary for anyone working with animals.

## LOCATION



## COURSE DETAILS

- UCAS course code: D306
- Entry requirements: 104 points  
(see page 63 for guidance)
- Study mode: Full-time
- Validated in partnership with:  
Coventry University

## CAREER PROGRESSION

- Animal trainer
- Companion animal behaviour therapist
- Behavioural researcher
- Animal welfare scientists and officers
- Zoo keeper
- Education, training and teaching



# CANINE THERAPY & REHABILITATION

BSc (HONS)

Canine rehabilitation is widely regarded as one of the fastest growing areas in pet welfare and veterinary practice.

It will cover aspects of hydrotherapy and land-based rehabilitation in the small animal including the in-patient, the out-patient and the elite athlete. The overall focus of the course is a holistic approach to maintaining and improving animal health and welfare and therefore also includes the development of positive behavioural modification techniques and therapeutic handling skills to facilitate the rehabilitation process.

The course will develop your understanding of the scientific principles and clinical practice of the prehabilitation techniques for maximum performance and health and rehabilitation techniques for animals post veterinary treatment.

## LOCATION



## COURSE DETAILS

- UCAS course code: D301
- Entry requirements: 104 points  
(see page 63 for guidance)
- Study mode: Full-time
- Validated in partnership with:  
Coventry University

## CAREER PROGRESSION

- Working for:
  - a charity
  - an animal rescue centre
  - kennels or stables specialising in rehabilitation
- Opportunities to specialise in hydrotherapy and / or massage



# EQUINE PERFORMANCE COACHING

BSc (HONS)

**The modern coach plays a vital role in the development of sporting performance, and coaching is no longer seen as purely teaching but has evolved to include a more holistic approach.**

Knowledge of areas such as sports psychology, nutrition, biomechanics, fitness and new technology is vital to coach horse and rider partnerships

to fulfil potential and reach peak performance. This course is suited to students who are keen to study equine to degree level in order to successfully coach horse riders of all levels.

Students will have the opportunity to ride every week over the duration of the course and will also gain a 1st4sport equine coaching qualification on completion of their degree.

## LOCATION



MORETON MORRELL  
COLLEGE

## ★ COURSE DETAILS

- UCAS course code: DX41
- Entry requirements: 104 points  
(see page 63 for guidance)
- Study mode: Full-time
- Validated in partnership with:  
Coventry University

## ➔ CAREER PROGRESSION

- Performance coach
- Sports psychologist
- Sports therapy and rehabilitation
- Postgraduate study



**INTEGRATED  
FOUNDATION  
YEAR**

OPTION AVAILABLE  
See page 26

# EQUINE SCIENCE

BSc (HONS)

**This course covers all aspects of Equine Science to provide students with the key knowledge and skills to enter the equine science industry.**

From exciting new developments in equine microbiology, nutrition and reproduction through to advances in biotechnology; if you aspire to a career

in equine science, research or clinical practice, then this is the course for you. Offering a rich and varied syllabus that explores equine science from both clinical and welfare perspectives, the course facilitates the development of real world professional skills and knowledge essential to those wishing to work in a clinical or scientific context.

## LOCATION



MORETON MORRELL  
COLLEGE

## ★ COURSE DETAILS

- UCAS course code: D323
- Entry requirements: 104 points  
(see page 63 for guidance)
- Study mode: Full-time
- Validated in partnership with:  
Coventry University

## ➔ CAREER PROGRESSION

- Equine nutritionist
- Veterinary researcher
- Microbiologist
- Laboratory scientist
- College lecturer



**INTEGRATED  
FOUNDATION  
YEAR**

OPTION AVAILABLE  
See page 26



# EQUINE THERAPY & REHABILITATION

BSc (HONS)

**Therapy and rehabilitation of equine performance is a rapidly growing area of the equine industry. It is now recognised by the industry that the need for alternative therapies is paramount in order to promote horse health and performance.**

This innovative course enables students to develop excellent therapeutic vocational skills, as well as provide sound academic and specialist knowledge in order to promote equine performance within all fields of the equine industry. Students will make full use of our state-of-the-art equine therapy and rehabilitation centre.

## LOCATION



MORETON MORRELL  
COLLEGE

## COURSE DETAILS

- UCAS course code: D422
- Entry requirements: 104 points  
(see page 63 for guidance)
- Study mode: Full-time
- Validated in partnership with:  
Coventry University

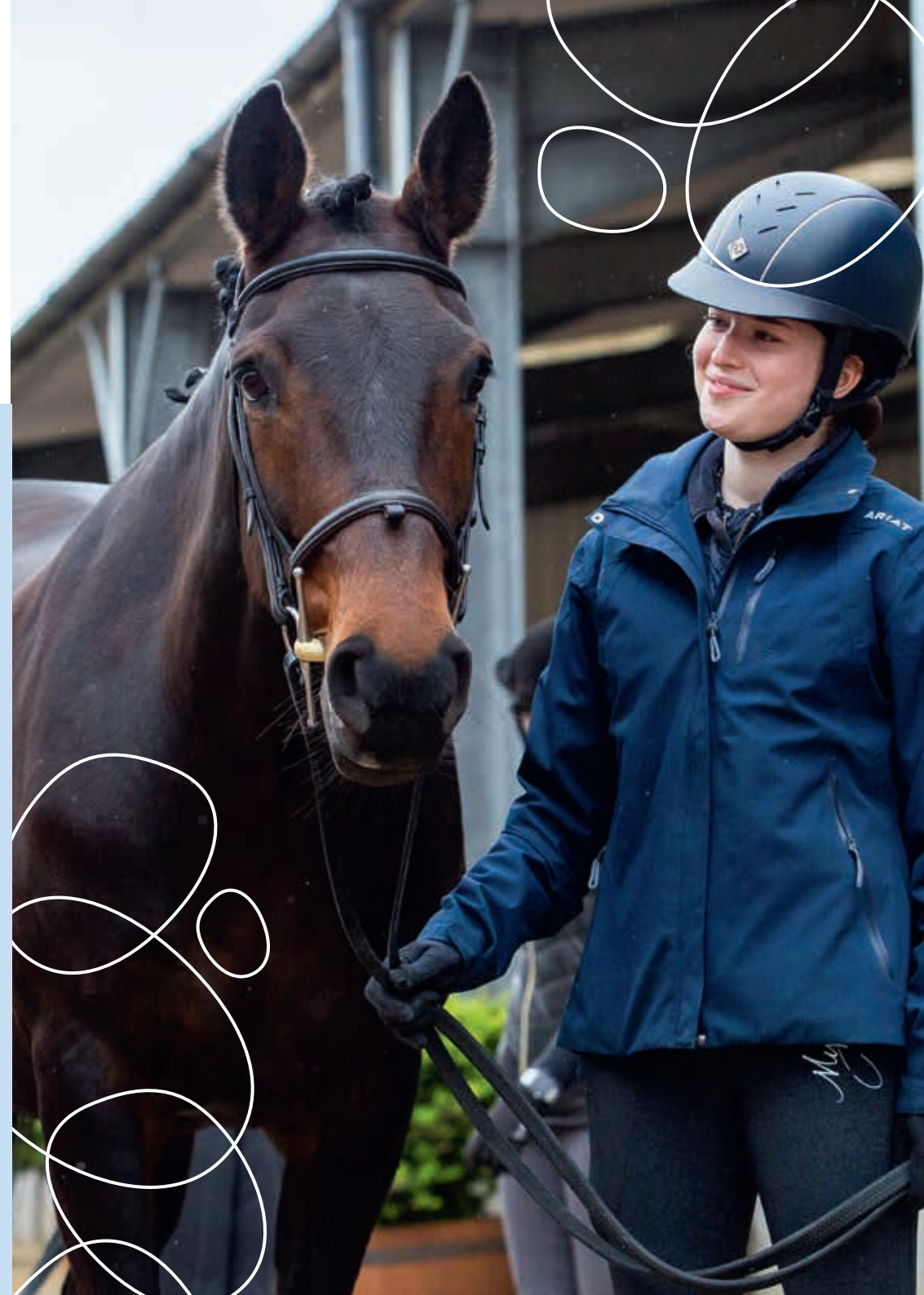
## CAREER PROGRESSION

- Equine therapist
- Rehabilitation centre manager
- Equine hydrotherapist



INTEGRATED  
FOUNDATION  
YEAR

OPTION AVAILABLE  
See page 26



# VETERINARY PHYSIOTHERAPY

BSc (HONS)

**This course is an excellent opportunity for students wishing to qualify as a Veterinary Physiotherapist whilst studying a degree qualification. Recognised by the National Association of Veterinary Physiotherapists (NAVVP), this course combines academic study and occupational competence.**

Graduates will be eligible to apply for full membership of NAVVP, which works for the promotion of professional standards, and provides insurance, CPD opportunities and recognition within the industry. There is an opportunity to engage with our on-site Canine Clinic as part of your studies.

## LOCATION



MORETON MORRELL  
COLLEGE

## COURSE DETAILS

- UCAS course code: 56D2
- Entry requirements: 128 points  
(see page 63 for guidance)
- Study mode: Full-time
- Validated in partnership with:  
Coventry University

## CAREER PROGRESSION

- Work within greyhound and equine sports
- Work with livestock or zoo animals
- Veterinary physiotherapist



“

**It was challenging but definitely worth it.**

Really hands on with the animals. I really enjoyed the practicals with dogs and you get to know the staff dogs.

Holly Paton – BSc (Hons) Veterinary Physiotherapy

# VETERINARY NURSING

BSc (HONS) / BSc (HONS) TOP-UP

**The BSc (Hons) course combines academic study and occupational competence and the course is accredited by the Royal College of Veterinary Surgeons (RCVS).**

Students begin this four year course with applied anatomy and physiology, progressing onto breeding and nutrition, anaesthesia, surgical and diagnostics. In the third year there are opportunities to specialise in specific optional modules, and in the final year, students undertake a dissertation.

**The BSc (Hons) Top-up** is a one year, progression award for those who have completed the FdSc Veterinary Nursing or a related course with RCVS recognised veterinary nursing competences up to Level 5. It offers students the opportunity to build upon their existing knowledge and is ideal for those wishing to pursue a senior management role or move into teaching and/or research. You will study five modules throughout the year, all at Level 6.

## → CAREER PROGRESSION

- Veterinary nurse
- Veterinary practice manager
- Veterinary lecturer
- Related career in the pharmaceutical industry

SUBJECT	AWARDING BODY	AWARD	LOCATION & STUDY MODE	UCAS CODE	ENTRY REQUIREMENTS (see page 63)
Veterinary Nursing	CU	BSc (Hons)	MM – Full-time	D310	104 points
Veterinary Nursing (Top-up)	CU	BSc (Hons)	MM – Full-time	D3NF	Foundation degree / Level 5



# VETERINARY NURSING

FdSc

**This course is an excellent opportunity for students wishing to qualify as a RCVS Registered Veterinary Nurse (RVN) whilst studying a Level 5 higher education qualification accredited by the Royal College of Veterinary Surgeons (RCVS).**

Students will, therefore, combine academic study with occupational competence over the normal three-year duration of the full-time course.

## 📍 LOCATION



## ★ COURSE DETAILS

- UCAS course code: D311
- Entry requirements: 80 points (see page 63 for guidance)
- Study mode: Full-time
- Validated in partnership with: Coventry University

## → CAREER PROGRESSION

- Veterinary nurse
- Veterinary practice manager
- Veterinary lecturer
- Related career in the pharmaceutical industry



# AGRI-TECH (HORTICULTURE)

FdSc

**This course will provide you with the knowledge and skills needed to succeed in the contemporary horticultural industries. You will develop the skills to become a leader of change in a sustainable urban production environment.**

The changing global agriculture sector is meeting the challenges of production by means of digital, mechanical and

biochemical technological innovations, allowing producers to make informed decisions using sensors, communications and data analytics. As the industry evolves it is important that you have a knowledge of advanced machinery, monitoring technologies and genetics to reflect the automation of tasks now taking place in the land-based industries.

## LOCATION



PERSHORE  
COLLEGE

## COURSE DETAILS

- UCAS course code: D600
- Entry requirements: 80 points  
(see page 63 for guidance)
- Study mode: Full-time
- Validated by: Warwickshire College

## CAREER PROGRESSION

- Agronomist
- Horticultural nursery manager
- Logistics manager (fresh produce)
- Laboratory research assistant
- Urban farm manager



# CONSTRUCTION & THE BUILT ENVIRONMENT

HNC / HND

Both courses are intended as vocational qualifications within the construction industry. They are also ideal for those who are already working in, or training for, a technician role in the construction industry and are looking to enhance their qualifications to progress in their career.

The aim of these courses is to develop students with a technical understanding of the construction and building industries, including the application of proven techniques and theories for the solution of real life problems.

## CAREER PROGRESSION

- Building surveyor
- Construction manager
- Commercial manager
- Quantity surveyor
- On-site and office manager
- Senior site manager
- Designer
- Building control / planning officer
- Procurement manager

SUBJECT	AWARDING BODY	AWARD	LOCATION & STUDY MODE	UCAS CODE	ENTRY REQUIREMENTS (see page 63)
Construction and the Built Environment	Pearson	HNC	RUG – Part-time	N/A	Level 3
Construction and the Built Environment	Pearson	HND	RUG – Full-time	K220	Level 3



FOR PART-TIME COURSE, APPLY DIRECT at [wcg.ac.uk](http://wcg.ac.uk)

# ENGINEERING

HNC / HND / BEng (HONS) TOP-UP

These courses have been designed to meet the needs of the industry by developing advanced technical and managerial skills. Importantly, the nature of these courses means that you will be able to apply and develop a great deal of your learning in your workplace.

This means that much of the work that you do will be personalised to your area of interest, your specific industry and even your own organisation (providing you are working within a relevant engineering environment). You'll benefit from the opportunity to share your learning experience with colleagues from a similar industry background.

## CAREER PROGRESSION

- Manufacturing and planning engineer
- Design engineer
- Electrification engineer
- Operation engineer

SUBJECT	AWARDING BODY	AWARD	LOCATION & STUDY MODE	UCAS CODE	ENTRY REQUIREMENTS (see page 63)
Electrical and Electronic Engineering	Pearson	HNC	RUG – Part-time	N/A	Level 3
Manufacturing Engineering	Pearson	HNC	RUG – Part-time	N/A	Level 3
General Engineering	Pearson	HNC	RUG – Part-time	N/A	Level 3
General Engineering	Pearson	HND	RUG & EVE – Full-time	H101	48 points / Level 3
General Engineering	Warwickshire College	BEng	RUG – Full-time	H102	Level 3
Engineering HND (Top-up)	Pearson	HND	RUG – Part-time	N/A	HNC
Manufacturing Engineering	Warwickshire College	BEng	RUG – Part-time	N/A	Foundation degree / Level 5
Electrical Engineering	Warwickshire College	BEng	RUG – Part-time	N/A	Foundation degree / Level 5



FOR PART-TIME COURSES, APPLY DIRECT at [wcg.ac.uk](http://wcg.ac.uk)

# COMPUTER NETWORKS & CYBERSECURITY

FdSc / BSc (HONS) / BSc (HONS) TOP-UP

**This course offers students the chance to immerse themselves in practical aspects of computing and network technology.**

Commercial SME/corporate work-based learning and placements are an integral feature of this course. The understanding of how key aspects of business are related to computing and are fundamental to network and IT infrastructure and business operations is explored.

Students will be introduced to the professional standards of corporate

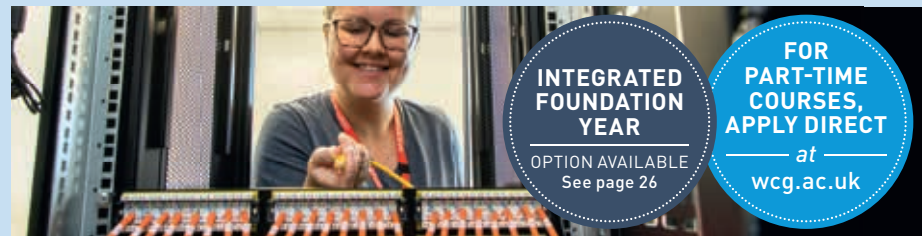
business and the computer industry and cover subjects in addition to networking including security, programming, user experience, systems analysis and database design to prepare students for a rewarding career.

At the centre of our students' learning is employability; the course provides the opportunity for students to undertake a work placement, and the course maps to the CCNA curriculum giving students the opportunity to register to take the qualification test.

## ➔ CAREER PROGRESSION

- IT support / network / end user IT support engineer
- Systems analyst
- Information technology consultant

SUBJECT	AWARDING BODY	AWARD	LOCATION & STUDY MODE	UCAS CODE	ENTRY REQUIREMENTS (see page 63)
Computer Networks & Cybersecurity	Warwickshire College	FdSc	RLS & MHDC* - Full-time	I902	80 points
Computer Networks & Cybersecurity	Warwickshire College	BSc (Hons)	RLS & MHDC* - Full-time	I903	80 points
Computer Networks & Cybersecurity	Warwickshire College	BSc (Hons)	RLS & MHDC* - Full-time	N/A	80 points
Computer Networks & Cybersecurity (Top-up)	Warwickshire College	BSc (Hons)	RLS & MHDC* - Full-time	I906	Foundation degree / Level 5
Computer Networks & Cybersecurity (Top-up)	Warwickshire College	BSc (Hons)	RLS & MHDC* - Full-time	N/A	Foundation degree / Level 5



## DID YOU KNOW?

Our FdSc Computer Networks and Cybersecurity course carries the **Higher Technical Qualification** kitemark relating to the Level 4 Network Engineer occupational standard.



# BUSINESS & MANAGEMENT

FdA

**At the centre of learning for this Foundation degree are the student's employability and the understanding of how businesses function and thrive.**

Students will be introduced to the professional standards of corporate business and be exposed to entrepreneurial concepts that will enable them to see opportunities for creating businesses or engage in a rewarding career.

## LOCATION



ROYAL LEAMINGTON SPA  
COLLEGE

## COURSE DETAILS

- UCAS course code: NN12
- Entry requirements: 80 points  
(see page 63 for guidance)
- Study mode: Full-time / Part-time
- Validated by: Warwickshire College

## CAREER PROGRESSION

- HR manager
- Financial manager
- Retail store manager
- Marketing manager
- Hospitality manager
- Hairdressing or beauty salon manager
- Business owner or manager
- Further study (completion of a Top-up Level 6 qualification) leading to a Masters degree



FOR  
PART-TIME  
COURSE,  
APPLY DIRECT  
at  
wcg.ac.uk



# BUSINESS & MANAGEMENT

BA (HONS) / BA (HONS) TOP-UP

**This exciting degree course in Business and Management has been designed in collaboration with local employers to meet their knowledge and skills requirements.**

This course includes study modes that are ideal for those in full-time work wishing to achieve an Honours degree in part-time hours and for those who have already completed a Foundation degree or HND.

The course fully exploits students' employment experience and can be greatly beneficial to students in their roles as employees and employers alike. Students will develop high level academic and work skills, enabling them to critically analyse, evaluate and research issues affecting business, strategy and management.

## ➔ CAREER PROGRESSION

- Small company leader
- Senior management role
- Graduate programmes
- Level 7 qualification leading to MBA

SUBJECT	AWARDING BODY	AWARD	LOCATION & STUDY MODE	UCAS CODE	ENTRY REQUIREMENTS (see page 63)
Business & Management	Warwickshire College	BA (Hons)	RLS – Full-time	NN13	80 points
Business & Management	Warwickshire College	BA (Hons)	RLS – Part-time	N/A	80 points
Business & Management (Top-up)	Warwickshire College	BA (Hons)	RLS – Full-time	NN22	Foundation degree / Level 5
Business & Management (Top-up)	Warwickshire College	BA (Hons)	RLS – Part-time	N/A	Foundation degree / Level 5



**INTEGRATED FOUNDATION YEAR**

OPTION AVAILABLE  
See page 26

**FOR PART-TIME COURSES, APPLY DIRECT**  
at  
[wcg.ac.uk](http://wcg.ac.uk)



“

**Everything we were learning was so relevant, including Project Management and Finance...**

**...I really enjoyed meeting people and the evening classes. The tutors were amazing.**

Lauren Pugh – BA (Hons) Business Strategy and Management





# COUNSELLING & PSYCHOTHERAPY

FdSc

**This course meets the professional standards required to practise as a psychological counsellor with clients of all ages and in a range of settings.**

Linking theory to practice on a supervised placement, the course will develop your skills to work with a wide range of clients, including children, young people and clients with complex issues. In addition, this course will provide you with the professional and academic training to become a reflective practitioner, who can meet changing needs within the counselling profession.

This course meets the British Association for Counselling and Psychotherapy (BACP) training requirements for graduates to take the Certificate of Proficiency and to pursue post-qualification individual membership and accreditation. The course also subscribes to the BACP Ethical Framework (2018) and course lecturers and academic tutors are BACP accredited and / or registered professional counsellors and psychotherapists.

## ★ COURSE DETAILS

- UCAS course code: B942
- Entry requirements:  
[see page 63 for guidance]
  - Be 21 years or over and evidence qualifications at Level 3 or above
  - A certificate in counselling skills
  - Alternative qualifications will be considered but a basic competence in listening/counselling skills is needed
  - A robust reference confirming academic and psychological readiness is required prior to interview
- Study mode: Full-time / Part-time
- Validated by:  
Warwickshire College

FOR  
PART-TIME  
COURSE,  
APPLY DIRECT  
— at —  
wcg.ac.uk

## 📍 LOCATIONS



PERSHORE  
COLLEGE



ROYAL LEAMINGTON SPA  
COLLEGE

## ➔ CAREER PROGRESSION

- Progression to full degree and postgraduate study
- University or college counsellor / psychotherapist
- School counsellor (primary or secondary)
- Counsellor for Employee Assistance Programme
- Counsellor / psychotherapist in tertiary care e.g. specialist services for bereavement, mental health or survivors of abuse
- Counselling service manager
- Private practice: face-to-face or online

# COUNSELLING & PSYCHOTHERAPY

BSc (HONS) / BSc (HONS) TOP-UP

**The BA (Hons) Counselling is intended for students who are aiming for a career in psychotherapeutic counselling, including all required elements in order to practice in accordance with industry standards.**

The BA (Hons) Level 6 (Top-up) course is intended for students who are already qualified therapists working in the counselling sector and who wish to study to Honours level and beyond in order to enhance their employment and promotion prospects.

## ★ ENTRY REQUIREMENTS FOR BSc (HONS) TOP-UP

(see page 63 for guidance)

- An FdSc in a Counselling qualification or related specialism
- OR an Advanced Diploma in Counselling with 120 credits minimum at Level 5
- Transferable skills/relevant professional experience may be taken into consideration

## ➔ CAREER PROGRESSION

- Progression to postgraduate study
- Training within an NHS setting
- Teaching within an HE counselling training programme
- Postgraduate counselling specialism

SUBJECT	AWARDING BODY	AWARD	LOCATION & STUDY MODE	UCAS CODE	ENTRY REQUIREMENTS (see page 63)
Counselling and Psychotherapy	Warwickshire College	BSc (Hons)	RLS & PER - Full-time	B943	See page 49
Counselling and Psychotherapy	Warwickshire College	BSc (Hons)	RLS & PER - Part-time	N/A	See page 49
Counselling and Psychotherapy (Top-up)	Warwickshire College	BSc (Hons)	RLS - Full-time	C844	See above
Counselling and Psychotherapy (Top-up)	Warwickshire College	BSc (Hons)	RLS - Part-time	N/A	See above



**INTEGRATED FOUNDATION YEAR**

OPTION AVAILABLE  
See page 26

**FOR PART-TIME COURSES, APPLY DIRECT**

at  
[wcg.ac.uk](http://wcg.ac.uk)



“

**This has completely changed my life and given me opportunities I have never had before...**

...It was the only course around that qualified you in CBT. For me it was a really easy choice.

Andrea Neville – FdSc Counselling

# EARLY YEARS EDUCATOR

FdA

**This course provides a broad foundation of knowledge and skills required to work with young children. It is designed to provide students with a 'licence to practice' in an early years setting and obtain the skills and knowledge needed to make a difference in children's lives, by shaping strategies around early years development.**

This course is written to support the Early Years Foundation Stage Framework and to introduce students to the Early Years Professional Status. The course relies heavily on work-based learning and therefore students complete work placements where they will apply and practise theory and use their workplace experience in a range of assessment tasks.

## LOCATIONS\*



RUGBY COLLEGE



ROYAL LEAMINGTON SPA COLLEGE

## ★ COURSE DETAILS

- UCAS course code (full-time): X378
- Entry requirements: 80 points (see page 63 for guidance)
- Study mode: Full-time / Part-time
- Validated by: Warwickshire College

\*Depending on applicant numbers it may be necessary to consolidate this course for delivery at Royal Leamington Spa College

## ➔ CAREER PROGRESSION

- Teaching assistant
- Room leader
- Higher level teaching assistant
- Special educational needs coordinator
- Deputy or senior manager



FOR PART-TIME COURSE, APPLY DIRECT at [wcg.ac.uk](http://wcg.ac.uk)

# EARLY YEARS, CHILDHOOD & EDUCATION STUDIES

BA (HONS) TOP-UP

**This carefully designed course has been developed to provide progression for those who have completed a Level 5 qualification in Early Years.**

The course further develops students' subject knowledge, understanding and judgement and explores relationships

between different aspects of the field of study to examine it in a broader perspective. The course develops personal effectiveness and the employability of students in line with Government policy to upskill the workforce involved within the Early Years and Childhood sector.

## LOCATION



ROYAL LEAMINGTON SPA COLLEGE

## ★ COURSE DETAILS

- Please apply direct via [wcg.ac.uk](http://wcg.ac.uk)
- Entry requirements: Foundation degree / Level 5 (see page 63 for guidance)
- Study mode: Part-time
- Validated in partnership with: Coventry University

## ➔ CAREER PROGRESSION

- Early years, primary or secondary teacher
- Family support worker
- Learning mentor
- Social worker
- Children's nurse
- Child psychologist
- Speech and language therapist
- Special educational needs teacher



FOR PART-TIME COURSE, APPLY DIRECT at [wcg.ac.uk](http://wcg.ac.uk)

# DIGITAL FILM PRODUCTION

FdA / BA (HONS) / BA (HONS) TOP-UP

**This is a practical course which aims to develop creative craft skills in visual storytelling.**

At its core, the course embeds current discussions on film and screen culture. This is achieved through the production of practical work across different media platforms for participation in the world arena, whilst contributing to the debate on how film is received and consumed in today's world.

Industry craft skills are taught in production and post-production techniques and constant access to industry standard equipment and software. This supports the teaching and learning of these skills with a view to creating narratives in differing contexts and for differing purposes.



## → CAREER PROGRESSION

- Freelance film-maker
- Content producer
- Teaching / software training
- Camera Operator / Editor / Producer / Director

SUBJECT	AWARDING BODY	AWARD	LOCATION & STUDY MODE	UCAS CODE	ENTRY REQUIREMENTS (see page 63)
Digital Film Production	Warwickshire College	FdA	RLS – Full-time	016W	80 points
Digital Film Production	Warwickshire College	BA (Hons)	RLS – Full-time	018W	80 points
Digital Film Production	Warwickshire College	BA (Hons)	RLS – Part-time	N/A	80 points
Digital Film Production (Top-up)	Warwickshire College	BA (Hons)	RLS – Full-time	P313	Foundation degree / Level 5
Digital Film Production (Top-up)	Warwickshire College	BA (Hons)	RLS – Part-time	N/A	Foundation degree / Level 5



**INTEGRATED FOUNDATION YEAR**

OPTION AVAILABLE  
See page 26

**FOR PART-TIME COURSES, APPLY DIRECT**

at [wcg.ac.uk](http://wcg.ac.uk)

# DIGITAL MEDIA CONTENT

FdA

**This course is designed for people looking to become digital producers of innovative media content for various platforms including v/blogging and social media such as YouTube, Twitter, Facebook and HTML5. Training will focus on producing content that engages audiences in an immersive experience and understands the market that content is being created for.**

Twenty-first century communication is all about connectivity and participation and the way we connect and participate is changing these lines of communication. Our digital narratives involve complex networking across platforms and navigating this is a desired skill both in our personal and work lives.

## 📍 LOCATION



ROYAL LEAMINGTON SPA COLLEGE

## ★ COURSE DETAILS

- UCAS course code: 017W
- Entry requirements: 80 points  
(see page 63 for guidance)
- Study mode: Full-time
- Validated by: Warwickshire College

## → CAREER PROGRESSION

- Media content producer
- Social media content producer
- Digital journalist
- Blogger or YouTuber
- Content writer and researcher
- Video producer
- Cameraman
- Editor
- Digital marketing and PR
- Communications officer



# GRAPHIC DESIGN WITH PHOTOGRAPHY

HND\*

**This course offers a package of creative skills that will challenge and inspire students, providing the platform needed to launch a career in the graphic design or photography creative industry.**

This course will involve practical based work, whilst using the college's graphic design and photography studios.

Theoretical studies will underpin skills and allow students to apply themselves by taking on briefs as a professional designer or photographer. Combining live projects, core practical skills tuition and critical thinking, this course aims to get students industry ready and able to engage fully in the contemporary workplace.

## LOCATION



ROYAL LEAMINGTON SPA COLLEGE

## COURSE DETAILS

- UCAS course code: WW26
- Entry requirements: 64 points (see page 63 for guidance)
- Study mode: Full-time
- Validated by: Pearson

## CAREER PROGRESSION

- Graphic designer
- Photographer
- Freelance designer
- Marketing officer
- Creative artworker
- Art director
- Creative head



# GAMES ART

FdA / BA (HONS) / BA (HONS) TOP-UP



**Our Games Art courses are delivered in one of the UK's games industry hubs, Royal Leamington Spa. Written and developed with over ten local games studios, our course will teach you how to research, develop and produce industry standard video game assets and indie games.**

Designed to develop your skills in the research, development, and production of video game assets, you will learn techniques in 3D modelling, texturing and lighting, concept art, animation

and life drawing. You will produce and submit a game registered as an Apple iOS developer and / or an Oculus / Vive developer and have the opportunity to work for our in-house student-led game studio, Studio 694.

This course is industry recognised by ScreenSkills, the industry-led skills body for the UK's screen-based industries, and carries the ScreenSkills Select quality-mark which indicates courses best suited to prepare students for a career in the screen industries.



## CAREER PROGRESSION

- Game designer
- Concept artist
- 2D / 3D artist
- Technical artist

SUBJECT	AWARDING BODY	AWARD	LOCATION & STUDY MODE	UCAS CODE	ENTRY REQUIREMENTS (see page 63)
Games Art	Warwickshire College	FdA	RLS - Full-time	I630	80 points
Games Art	Warwickshire College	BA (Hons)	RLS - Full-time	I632	80 points
Games Art	Warwickshire College	BA (Hons)	RLS - Part-time	N/A	80 points
Games Art (Top-up)	Warwickshire College	BA (Hons)	RLS - Full-time	I631	Foundation degree / Level 5
Games Art (Top-up)	Warwickshire College	BA (Hons)	RLS - Part-time	N/A	Foundation degree / Level 5



INTEGRATED FOUNDATION YEAR  
OPTION AVAILABLE See page 26

FOR PART-TIME COURSES, APPLY DIRECT at [wcg.ac.uk](http://wcg.ac.uk)

# PERFORMING ARTS

FdA / BA (HONS) / BA (HONS) TOP-UP

**The FdA and BA (Hons) Performing Arts courses are designed for students who wish to turn their creative talents and passion into a career as a practitioner or teacher in Theatre, Film, TV and other emerging platforms.**

Alongside ensemble, theatre company style performance work, students undertake classes in Audition & Acting Techniques, Screen Acting, Voice,

Singing, Improvisation, Movement and Physical Theatre, Stage Combat, Dance, Text Analysis and Interpretation, Digital Theatre and Applied Theatre & Education.

As well as working with our passionate team of lecturers, we have an exciting programme of visiting companies and professionals. They provide workshops and lectures throughout the year, in which students can forge links with the industry.



## ➔ CAREER PROGRESSION

- Performer
- Actor
- Dancer
- Musician
- Teacher
- Singer

SUBJECT	AWARDING BODY	AWARD	LOCATION & STUDY MODE	UCAS CODE	ENTRY REQUIREMENTS (see page 63)
Performing Arts	Warwickshire College	FdA	RUG - Full-time	W470	80 points
Performing Arts	Warwickshire College	BA (Hons)	RUG - Full-time	W473	80 points
Performing Arts	Warwickshire College	BA (Hons)	RUG - Part-time	N/A	80 points
Performing Arts (Top-up)	Warwickshire College	BA (Hons)	RUG - Full-time	W472	Foundation degree / Level 5
Performing Arts (Top-up)	Warwickshire College	BA (Hons)	RUG - Part-time	N/A	Foundation degree / Level 5

**INTEGRATED FOUNDATION YEAR**

OPTION AVAILABLE  
See page 26

**FOR PART-TIME COURSES, APPLY DIRECT**

at

[wcg.ac.uk](http://wcg.ac.uk)

# SPORT & EXERCISE SCIENCE

HNC / HND



**In association with Leamington Football Club (LFC), this is a unique opportunity to study at a Higher National Level in Sport, whilst being part of our Football Academy.**

This one-year, Higher National Certificate (HNC) course is coached by an expert team, with up to 10 hours of additional football a week. Students may also play LFC fixtures at the local stadium, receive season tickets to LFC, train with the first

team and attend scouting opportunities. You will have access to your own Fitness, Strength and Conditioning Coach, Sports Therapist and Nutritionist and those who have successfully completed the HNC, can then move on to a top-up year, to gain their Higher National Diploma (HND).

If you wish to study the HNC/D in Sport without the option of football, this can also be considered.

## 📍 LOCATION



## ★ COURSE DETAILS

- UCAS course code: C620
- Entry requirements: (see page 63 for guidance)
  - Level 3 in Sport (or related subject) + GCSE Maths & English Grade 4 or above (or international equivalent)
  - Students must attend football trials and have a good level of playing ability
- Study mode: Full-time
- Validated by: Pearson

## ➔ CAREER PROGRESSION

- Sports coaching, development or therapy
- Sport and recreation management
- Teaching PE
- Sports nutrition
- Sports psychology



# CELEBRATE AT YOUR GRADUATION

## A TRULY MEMORABLE OCCASION

The beautiful streets of historic Warwick are the backdrop for our graduation ceremony. WCUC graduates don their gowns, hoods and mortarboards before moving with friends and family to the ceremony at the 900 year-old St Mary's Church. Following the ceremony is a procession led by a trumpet fanfare.



# HIGHER & DEGREE APPRENTICESHIPS

## HIGHER APPRENTICESHIPS

**Did you know that you have the opportunity to move your career forward and gain professional skills – all whilst working and earning a salary?**

Higher apprenticeships enable you to get a head-start in your career and gain technical knowledge and skills by offering you the chance to learn from the experts whilst you study and practice your learning during on-the-job work experience. WCG works with leading companies such as Jaguar Land Rover and the Air Ambulance to offer higher apprenticeships, with new employers offering positions all-year-round.\*

According to government figures, **90% of apprentices in England stayed on in employment after completing their qualification and 71% with the same employer\*\*.**

**We are able to offer the following higher apprenticeship standards:**

- Propulsion Technician (Level 4)
- HR Consultant / Partner (Level 5)
- Engineering Manufacturing Technician (Level 4)

## DEGREE APPRENTICESHIPS

**Just like traditional degrees, an apprenticeship is a great route to a successful career. With a degree apprenticeship, you can achieve a full Bachelor degree.**

Degree apprenticeships bring together the best of higher and technical education, **combining degree study with practical skills gained in work and the financial security of a regular salary.**

Apprentices split their time between studying for their degree and applying this whilst learning new skills in the workplace and are employed throughout. This enables them to achieve their qualification whilst earning a wage and getting real on-the-job experience. WCG works with leading companies such as Cummins, Ricardo and Jacob Douwe Egberts Ltd on degree apprenticeships in Engineering, and new programmes are currently being developed\*.

**We are able to offer the following degree apprenticeship standards:**

- Manufacturing Engineer (Level 6)
- Control / Technical Support Engineer (Level 6)
- Electrical & Electronic Technical Support Engineer (Level 6)
- Product Design & Development Engineer (Level 6)

To find out more, please visit [wcg.ac.uk/apprenticeships](http://wcg.ac.uk/apprenticeships)



# INTERNATIONAL STUDENTS

Every year, we welcome students from across the world. Our group of seven colleges offers a vast array of degree-level subjects, where you will learn alongside UK students and have a truly British learning experience. With small class sizes, specialist facilities and on-site accommodation at three of our colleges, you will receive exceptional support, making WCUC a great place to study away from home.

## HOW TO APPLY

International students should follow the normal application procedure via UCAS. Our International Office can provide additional support for international students applying through UCAS, as well as advice about visas, help when arriving in the UK and developing English language skills for academic study.



We received the **first AoC (Association of Colleges) International Charter**, recognising our provision for international students and commitment to **developing all our students as global citizens.**

Call **+44 (0)330 135 6104** or email [international@wgc.ac.uk](mailto:international@wgc.ac.uk)

“

The Access to HE Diploma is a very good springboard for students who want to study Business in the UK but graduated from high school.

The diploma has a high degree of recognition and allowed me to apply to almost any of the top UK universities. I am studying Accounting and Finance at Durham University now, and the initial plan is to continue studies after graduation.

Linshan Duan – 2019/20 student on the International Foundation Programme (Business and Accounting)



# ENTRY REQUIREMENTS

**WCUC welcomes applications from students of all ages and each application is considered carefully.**

Generally, for many of our courses you will need to have **4-5 GCSEs including English Language and Maths at grade C/4 or above.** The college welcomes applications from students with disabilities and those with relevant work experience who may not have related formal academic qualifications, but please always contact us to discuss further\*.

UCAS tariff point requirements are listed in the course information in this guide and online. Tariff points can be achieved from many different qualifications (see [ucas.com](http://ucas.com) for more details).

## INTEGRATED FOUNDATION YEAR

You should have **completed your Level 3 studies** achieving the equivalent of **at least two A Levels or a pass in a BTEC course.** For some courses, you may also need your **Level 2 qualifications in English and/or Maths** (please see entry requirements for each individual course). It may be possible to study as a mature student with professional or industry experience.

## ACCESS TO HIGHER EDUCATION (HE)

If you don't have the traditional qualifications to get onto a degree course, you can study a **one-year, full-time Access to HE course.** This will prepare you for a degree course in a supportive environment. Entry requirements are subject-specific and can be found on our website. UK applicants should be aged 19 or over.

## TOP-UP DEGREES

Typically a **Level 5 qualification or Foundation degree** in a related subject is required for entry to a top-up degree.

## INTERVIEWS

For some courses you may be asked to attend an interview, portfolio review, audition or another type of assessment to form part of your application.

See our course pages or call **0300 456 0049** for further information.



\*Entry requirements are for guidance only. We welcome students with equivalent qualifications and combinations but please contact us to discuss further.



## FEES & FUNDING

### FULL-TIME

Fees are indicative and subject to change. The full-time HE course fee per academic year is on each course page on our website – [wcg.ac.uk](http://wcg.ac.uk).

### PART-TIME

For our degrees, the annual part-time course fee is dependent on how many academic credits you choose to study in an academic year. Each stage of the qualification (e.g. FdA Year 1 / FdA Year 2 / BA (Hons) top-up) will require you to complete 120 credits. You can study up to 120 credits in one academic year or study at a slower pace (usually 60 academic credits per year and up to a maximum of 80 credits per year).

For HE courses where part-time study is available, the part-time course fee per academic year is on each HE course page on our website – [wcg.ac.uk](http://wcg.ac.uk).

### FUNDING

Financial support may be available from the Government through student loans to pay for tuition fees and maintenance loans (for full-time courses) to cover living costs.

More information can be found at [wcg.ac.uk/hefinancialsupport](http://wcg.ac.uk/hefinancialsupport), or you can contact Student Finance England by calling **0300 100 0607**.

Please always consult the latest funding guidance on the [gov.uk](http://gov.uk) website to check your eligibility.

### INTEGRATED FOUNDATION YEAR

The tuition fee for 2022/23 entry is set at a reduced price for the first two years of an integrated foundation year course. Subsequent years of study are at the standard fee.

### BURSARIES

Bursaries are available for students participating in higher education courses at WCUC. Bursary funding may be subject to means-testing and terms and conditions can be found on the website.

### INTERNATIONAL

Please see our website for details of current fees for home (UK) and international (including the EU) applicants.



## NEXT STEPS

Visit [wcg.ac.uk](http://wcg.ac.uk) for full course details and to find out about all of our colleges.

### APPLY NOW

#### Full-time Courses

For most of our courses, you can apply online via UCAS at [ucas.com](http://ucas.com) – just search for Warwickshire College and / or your chosen subject.

You can find the individual course codes in this guide, on our website at [wcg.ac.uk/he](http://wcg.ac.uk/he) or give us a call on **0300 456 0049**.

#### Part-time Courses

To study these courses you need to apply directly to us. Just find the course on our website at [wcg.ac.uk/he](http://wcg.ac.uk/he) and click 'Apply now'.

### COME AND SEE US

All of our colleges have regular in-person and virtual open events so you can see our fantastic facilities, chat with expert tutors and find out more about our courses.

Visit our website at [wcg.ac.uk/openevents](http://wcg.ac.uk/openevents) for upcoming dates. Booking is essential for some events, so make sure to book early so you don't miss out!

### HOW TO FIND US

Maps and directions to all of our colleges are at [wcg.ac.uk/colleges](http://wcg.ac.uk/colleges).

### NEED ASSISTANCE?

Call us on **0300 456 0048** if you need help reading this guide.

### VISITING THE COLLEGE?

Please tell us if you have any individual requirements.





WARWICKSHIRE COLLEGE  
**UNIVERSITY  
CENTRE**

Visit [wcg.ac.uk/he](https://wcg.ac.uk/he) for full course details  
and to find out about all of our colleges.

0300 456 0049

[he@wcg.ac.uk](mailto:he@wcg.ac.uk)



ROYAL LEAMINGTON SPA  
COLLEGE



RUGBY  
COLLEGE



WARWICK TRIDENT  
COLLEGE



MORETON MORRELL  
COLLEGE



EVESHAM  
COLLEGE



PERSHORE  
COLLEGE



MALVERN HILLS  
CENTRE FOR DIGITAL  
& CYBER TECHNOLOGY

Every effort has been made to ensure this guide was correct at the time of publication. WCUC reserves the right to review or cancel subjects or courses. New courses are always in development and may therefore be subject to approval. Entry requirements are for guidance only. We welcome students with equivalent qualifications and combinations but please contact us to discuss further. Restrictions due to the health and safety measures put into place during the COVID-19 pandemic or events outside of WCUC's control, may result in changes to advertised details, including, but not limited to, dates and exact modes of delivery or events and facilities offered. Courses may differ in their mode of delivery and could include both face-to-face and remote delivery elements.

Please visit our website for the latest information. Terms and conditions apply.  
Warwickshire College and University Centre, WCUC, Warwickshire College Group and  
WCG are trading names of Warwickshire College.

W889 / SEPT21